

62

[1958]

LIBRARY  
RECEIVED  
★ MAR 27 1958 ★  
U. S. Department of Agriculture



H. V. LAWRENCE, INC.

~~THE CAPE COD NURSERIES AND GARDENING CENTER~~  
The Cape Cod Nurseries and Gardening Center  
FALMOUTH, MASSACHUSETTS



Gardening on Cape Cod

Since 1886





# GARDENING ON CAPE COD

 *Since 1886* 



*Landscape Offices, Flower Shop and Business Offices*

## H. V. LAWRENCE, INC.

### *The Cape Cod Nurseries*

FALMOUTH, MASSACHUSETTS

BUSINESS OFFICES, FLOWER SHOP AND LANDSCAPE OFFICES  
34 Depot Avenue, Falmouth — Tel. Kimball 8-3126

THE CAPE COD NURSERIES, Route 28, East Falmouth  
Manager's Office and Shipping Department  
Tel. Kimball 8-2492

The Cape Cod Gardening Center — Tel. Kimball 8-2493

Please address all correspondence to  
P. O. Drawer 32, Falmouth, Mass.





*The Simple Beauty of a Welcoming Dooryard*

## *Gardening on Cape Cod Since 1886*

“Gardening on Cape Cod” is more than the title of this booklet. It is the sum and substance of the horticultural services that H. V. Lawrence, Inc., and the Cape Cod Nurseries have steadily built up since our business was established 72 long years ago by its original founder, Harry V. Lawrence.

It combines the propagation, growing and selling in our Cape Cod Nurseries of a wide range of quality hardy plant materials best suited for this area, with a complete landscape service consisting of large forces of experienced labor, modern equipment, and all needed landscape construction materials for properly landscaping any home grounds, small or large, all under the supervision of five professionally trained landscape architects whose skill and practical experience provide the know-how needed for better Gardening on Cape Cod.



Thousands of well-pleased customers are our best salesmen, our strongest references. It has been well said that "money cannot buy the services of a client who sends his neighbor to you because he has been treated fairly and with courtesy."

Whenever or wherever you see or hear the phrase "Gardening on Cape Cod," let it always remind you that whether good gardening is a habit, a hobby or only a hope for you, with us at H. V. Lawrence's in Falmouth it is our dedicated lifetime occupation, constantly at your service.

H. V. LAWRENCE, INC.

*The Cape Cod Nurseries*

MILFORD R. LAWRENCE, *Pres. & Treas.*

LEWIS H. LAWRENCE, *Vice-President*

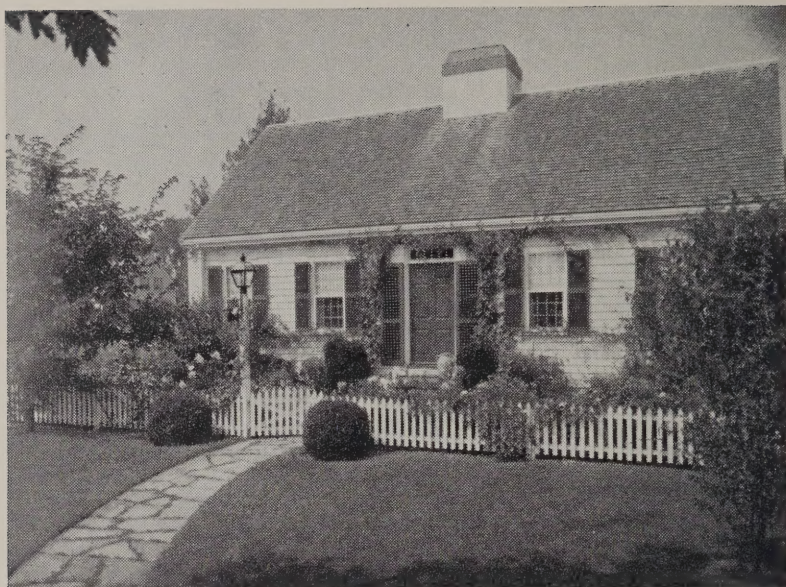
GEORGE H. BIGELOW, *Vice-President*

E. STANLEY BOLLES, *Nursery Manager*



*Skillful Landscape Planning Adds Beauty and Value to Every Home Grounds, Large or Small*





*An Attractive Cape Cod Home, Landscaped by Us*

## *To Small Home Owners — Especially*

Hundreds of small-home owners on and near Cape Cod are the very people H. V. Lawrence, Inc. and the Cape Cod Nurseries have been built primarily to serve.

More than four-fifths of all our sales of nursery plants, grass seed, fertilizers and all landscape materials have consistently been made for use on small house grounds. We cherish this business, and want to emphasize that while it has been our pleasant privilege to do the complete landscape designing and development work on many of Cape Cod's larger estates, we could not long continue in business if it were not for the average home owners, like you and you and you. The sale of a few rose bushes, a dogwood tree, a pound of lawn seed or a bag of fertilizer to a small-home owner, and his entire satisfaction

with that purchase in terms of service, quality and price, are of very real pleasure and satisfaction to us. Added together, the hundreds and thousands of such sales each season are the life blood of every business such as ours.

Simple attractive plantings, a few flowers, and a healthy well-kept lawn make the small house a home. And well-kept small homes are a source of pride to their owners, building just the type of community we all cherish for our own.

Indeed the business of the small-home owner, whoever and wherever he is, is always welcome at H. V. Lawrence's and the Cape Cod Nurseries, headquarters for better Gardening on Cape Cod for everyone.



*A Simple Flower Border Adds Much Beauty*





*Lupines, Iris and Poppies in the Spring Perennial Border*

## *Hardy Perennial Flowers*

Hardy perennials are those flowers which live on from year to year, and each season produce beautiful displays of blossoms of every conceivable color, form and character.

They are the backbone of every flower border or garden. Judiciously combined with selected annuals they provide continuing yet changing color beauty from early spring through to the fall frosts.

Because Cape Cod is such a summer home region, we specialize in those kinds that are at their best in midseason and early fall, and each year we grow in our greenhouses many thousands of the better annuals and bedding plants for use in summer gardens.

Plant both perennials and annuals. They add so much for so little cost and effort.

**Prices on all perennials, unless otherwise noted, are 3 for \$2.25, 6 or more at 65¢ each.**

---

**Soil preparation for perennial flowers** should provide a minimum depth of 12 inches of good fertile loam, and 18 inches is better where possible. Deep rooting is thus encouraged, with stronger growth and greater resistance to drought and to rigors of winter. Well-rotted cow manure worked in deeply before planting is best.



## Perennials

This list is alphabetical by botanical names and includes the most popular kinds.

**AJUGA**, Bugle. Blue, May-June. 6-8 in. Good for shade and ground cover.

**ALYSSUM**, Goldentuft. Bright yellow, May. 12 in.

**ANCHUSA**, Bugloss. Bright blue, June-Aug. 2-3 ft.

**ANEMONE**, Windflower. White and pink. Fine for fall. 2-3 ft.

**AQUILEGIA**, Columbine. Giant long-spur varieties all colors, May-July. 1½-2 ft.

**ARTEMISIA**, Silver Mound. Bright silvery gray mounds, all season. 12 in.

**ASCLEPIAS**, Butterfly weed. Bright orange, midsummer. 1½-2 ft.

**ASTER**, Michaelmas Daisy. Several new varieties of this fine fall favorite in lavender, deep blue, purple, pink and white, Sept.-Oct. 2-4 ft.

**ASTILBE**, Japanese Spirea. Beautiful plummy spikes of pure white and several pink shades, June-August. 1½-2 ft. Partial shade.

**CAMPANULA**, Canterbury Bells. Both Cup and Saucer and single varieties in pink, white, lavender and purple. Fine biennial, June. 2 ft.

**CERASTIUM**, Snow-in-Summer. Spreading masses of gray foliage, white flowers, May-June. 6-8 in.

**CERATOSTIGMA**, Leadwort. Brilliant blue trailing masses all summer. 6-9 in.

**CHRYSANTHEMUM coccineum**, Painted Daisy. The best hybrids in various shades of pink to crimson, June. 2-2½ ft.

**CHRYSANTHEMUM**, Shasta Daisy. Giant white semi-double, June-July. 2-2½ ft.

**CHRYSANTHEMUM**, Hardy Garden varieties. The great fall favorite in 12 outstanding varieties of the tall types and 6 best Cushion type including bronze, maroon, yellow, white and pink.

**CONVALLARIA**, Lily of the Valley. Generous clumps. Very fragrant, May-June. 8 in.

**DELPHINIUM chinense**. The lower sort in white, pale blue and bright blue varieties, June-July. 1½-2 ft.

**DELPHINIUM PACIFIC HYBRIDS**. The stately glorious Larkspur so widely admired. Giant spikes in separate colors, white, pale and deep blues, opal, purple and pinkish tones. \$1.00 each, \$10.80 per dozen.



- DIANTHUS plumarius.** Hardy Garden Pinks. Improved hybrids, all colors, June-July. 9-12 in.
- DIANTHUS Grenadin strains.** Carnation type flowers, yellow, white, pink, red, June-July. 1-1½ ft.
- DIANTHUS barbatus,** Sweet William. Popular biennial, bright clear pink, June. 1½-2 ft.
- DICENTRA,** Bleeding Heart. The smaller fringed variety in pink or white and the large old fashioned type, May.
- DIGITALIS,** Foxglove. Shirley Hybrid mixture pink and white. Biennial, June. 3-5 ft.
- ECHINOPS,** Globe Thistle. Steel blue globes, July-Aug. 3-4 ft.
- EPIMEDIUM,** Barrenwort. Excellent ground cover, partial shade. Rose Pink, May-June. 1 ft.
- FERNS,** Hayscented, Cinnamon and evergreen Christmas Fern. Fine ground covers. Sun or shade.
- GAILLARDIA, The Warrior.** Ruby red. All summer. 2-2½ ft.
- GYPSOPHILA, Bristol Fairy.** Baby's Breath. Airy double flower masses, July-Sept. 2-3 ft.
- HELIANTHEMUM,** Sunrose. Yellow to salmon flowers, June-July. 9-12 in.
- HELIOPSIS,** Hardy Sunflower. Good for cutting. Yellow, July-Aug. 3-4 ft.
- HELLEBORUS,** Christmas Rose. Large pinkish white flowers in late winter and early spring. \$1.00 each.
- HEMEROCALLIS,** Lemon Lily. 20 best low-priced Hybrid varieties. Large clumps, June-August. 2-3 ft.
- HEMEROCALLIS, Hyperion.** Giant canary yellow. \$1.00 each.
- HERBS,** Chives, Hyssop, Lavender, four kinds of Mints, Rosemary, Sage, Tarragon, Thyme, Winter Savory.
- HEUCHERA,** Coralbells. White and 3 pink shades, June-July. 1½-2 ft.
- HIBISCUS,** Mallow. Pink, white and red, August-Sept. 3-5 ft.
- HOLLYHOCKS,** Old New England favorites. Double pink and single mixed. Biennial July. 4-6 ft.
- HOSTA (Funkia),** Plantain Lily. Pure white and the new fragrant lavender "Honeybells."
- HYPERICUM,** St. Johnswort. Bright yellow, all summer. 1-1½ ft.
- IBERIS Snowflake.** Best pure white hardy Candytuft, May and August. 8-12 in.
- IRIS,** German. Eight fine varieties for full color range, May-June. 2-3 ft.



- IRIS**, Japanese. Ten named varieties, for mid summer beauty. 2-3 ft.
- IRIS**, Dwarf *pumila*. Several colors, early May and often in September. 9-12 in.
- KNIPHOFIA**, Torch Lily. Large gay spikes, yellow, orange-red, and white, July-Sept. 2-3 ft.
- LAVANDULA**, True Lavender. Popular fragrant foliage. Blue flowers. June-July, 1½ ft.
- LIATRIS**, Gayfeather. Rose and white spikes, Aug.-Sept. 1½-3 ft.
- LILIUM**, Lilies. Top quality potted bulbs of Gold Banded, Madonna, Centifolium Hybrids, Hardy Easter Lily, Olympic Hybrids, Regal, and Pink and White Speciosum. Priced according to variety, June-August. 2-5 ft.
- LINUM**, Flax. Masses of soft pale blue all season. 1½ ft.
- LUPINUS**, Russell Hybrid Lupine. Wide range of brilliant colors, June-July 2-3 ft.
- NEPETA**, Catmint. Billowing gray foliage, lavender flowers, May-June. 1 ft.
- PAEONIA**, Peonies. Many double-flowered varieties and the best in the Japanese single-flowered kinds. \$1.25 and \$1.50, June. 2-3 ft.
- PHLOX**. The great midsummer perennial. Over 20 of the leading named varieties, pure white, many pink shades, red and clean lavender, July-August. 1½-3 ft.
- PLATYCODON**, Balloon flower. Best midsummer blue perennial; also the new double kinds in blue, white and pale pink, July-August. 2-3 ft.
- PRIMULA**, Primroses. Most popular early spring perennial. Many colors, April. 8-12 in.
- SANTOLINA**, Lavender-cotton. Aromatic silver-gray foliage, yellow flowers, July. 1 ft.
- SEDUM**, Stonecrop. Several varieties of this rock garden stand-by, June-August. 6-18 in.
- STOKESIA**, **Blue Moon**. Giant fringed flowers of lavender blue, July-August. 12-18 in.
- TEUCRIUM**, Germander. Good for low clipped edging. Rose pink, July. 6-9 in.
- THYMUS**, Thyme. Five varieties, all scented; fine ground covers, July. 2-6 in.
- VERONICA**, Speedwell. Four best kinds, blue and white spikes, June-July. 1-2 ft.
- VINCA**, **Bowles Variety**, Periwinkle. (See ground-covers, page 24).
- VIOLA** **Scotch Hybrids**. Giant flowered hardy pansies, all colors, all season. 6-9 in.



*We also grow these other perennials. . . .*

**ACHILLEA**, Yarrow, yellow  
**ANTHEMIS**, Moonlight, yellow  
**ARENARIA**, Moss Sandwort, white  
**ARMERIA**, Thrift, Bright pink  
**ARTEMISIA**, Silver King, Gray foliage  
**ASTER**, Dwarf, varieties  
**AUBRETIA**, Purple Rock Cress  
**CAMPANULA carpatica**, Harebells, blue and white  
**CAMPANULA persicifolia**, Peach Bells.  
**CENTAUREA montana**, Hardy Cornflower, blue  
**COREOPSIS**, Tickseed, Yellow  
**DORONICUM**, Leopardbane, yellow  
**ECHINACEA**, Coneflower  
**GEUM**, Avens, Red and deep yellow  
**HELENIUM**, Sneezeweed, bronze

**LYCORIS**, Hardy Amaryllis, mauve  
**MONARDA**, Beebalm, red and pink  
**OENOTHERA**, Evening Primrose, yellow  
**PAPAVER**, Poppy, Iceland and Orientals  
**PENSTEMON**, Beard Tongue, pink  
**PHLOX subulata**, Creeping Phlox  
**SALVIA azurea**, Blue Sage  
**SAXIFRAGA**, Saxifrage, pink  
**SEMPERVIVUM**, "Hen-and-Chickens"  
**SIDALCEA**, Prairie Mallow, pink  
**THALICTRUM**, Meadowrue, Yellow  
**THERMOPSIS**, Yellow Lupine  
**VIOLA**, Tufted Pansy, several kinds  
**YUCCA**, Adam's Needle, white

*Perennials best for picking would include these: Columbine, Asters, Shasta Daisy, Chrysanthemum, Lily of the Valley, Delphiniums, Dianthus, Coreopsis, Doronicum, Baby's Breath, Coral Bells, Iris, Lilies, Lupine, Peonies, Tritoma.*

## Annuals and Bedding Plants

Annual flowers are unequalled for their June-to-frost color in gardens, borders and plant boxes.

We grow some 200,000 of the better kinds in our greenhouses and frames each spring. Started from seed or cuttings in late winter, many are already in bloom at planting time in late May and June.

Our potted plants have no setback when planted out.

Out of the thousands of kinds and colors offered in the market, we select and grow a selected list of special merit, true to color and name.

Husky, healthy plants in everything from alyssum to zinnias are ready May 15.

We carry a large supply of the better varieties of Gladiolus bulbs.

*Visit our new Cape Cod Gardening Center  
on Main Route 28 in East Falmouth  
Everything for Better Gardening on Cape Cod*





*Nothing Quite Equals the Beauty of Broad, Well-kept Lawns.*

## *Lawns and Lawn Care*

Good lawns do as much as shrubs and trees and flowers to make a home attractive.

To keep lawns good, feed them at least twice a year, in early spring and early fall. A third feeding in midsummer is desirable. Mow regularly, but not too close. Rake off leaves and litter, especially just before winter.

For proper lawn making and for capable maintenance of your lawns and grounds, our complete landscaping service is at your command.

## *Grounds Maintenance Service*

H. V. Lawrence's special maintenance crews are well equipped with knowledge, experience and tools to do whatever is required to keep your grounds attractive and healthy. Charges are reasonable, too.

Of course, if you are a charter member of the Do-It-Yourself Club, more power to you. We'll gladly supply you all the plants, tools, fertilizers, seeds, insecticides, you need. And with good equipment, you'll be well able to do a fine job.

Either way, we're here to help you.



*Roses are at Their Brilliant Best on Cape Cod*

## Roses

Hybrid Tea Roses, Floribundas and Climbing Roses all do exceptionally well on and near Cape Cod.

All roses benefit by extra-thorough soil preparation before planting. Anyone can grow and enjoy beautiful roses if he will buy first quality plants, plant them properly and take reasonably good care of them.

We offer a carefully selected range of proven varieties, including the outstanding All-American Award kinds and many of the older favorites.

Dormant bare-root plants are offered for early spring planting. After May 1 potted plants are recommended.

General price range for dormant plants is \$1.75 each, 6 or more at \$1.50 each, and for potted plants \$2.25 each, 6 or more at \$2.00 each. Patented and newest introductions are at slightly higher rates. All our plants are 2-year field-grown No. 1 grade.

For your convenience we list the various kinds by color groups. If you wish more detailed descriptions of individual varieties we will gladly send a special list.



## Hybrid Tea Roses

For your convenience this list is arranged by Flower colors.  
AA indicates recent All-America Award Rose.

### PINKS AND SALMONS

Capistrano (AA)  
Charlotte Armstrong  
Helen Traubel (AA)  
Katharine Marshall  
Mission Bells (AA)  
Tiffany (AA)

### WHITES

Blanche Mallerin  
Frau Karl Druschki  
Kaiserin Auguste Viktoria  
McGredy's Ivory  
White Knight (AA 1958)

### REDS

Chrysler Imperial (AA)  
Crimson Glory  
McGredy's Scarlet  
New Yorker

### YELLOWS AND APRICOTS

Diamond Jubilee (AA)  
Duquesa de Penaranda  
Fred Howard (AA)  
Horace McFarland  
Lowell Thomas  
McGredy's Yellow  
Mojave (AA)  
Sister Therese

### BICOLORS

Forty-niner, red & yellow  
Love Song, pink & yellow  
Peace, yellow and pink  
Pres. Herbert Hoover, cop-  
per-red and gold  
Talisman, yellow & scarlet

### Two Special Offers

**The Cape Cod Favorite Dozen.** Our selection of a complete color-range, all top-quality.

Dormant plants \$20; potted plants \$25.

**The Select Six.** Good varieties, all different, all top quality.

Dormant plants \$10; potted plants \$12.50.

## Cultural Notes on Roses

**Spraying.** Roses always benefit from regular spraying. Use Rose-tox, a combination that is easy to apply that controls Aphis, Blackspot and all other Rose insects and diseases. Keep the plants and ground clean from infected leaves.

**Feeding.** For best results feed Roses lightly every three weeks up to mid-August. We recommend Agrico-for-Roses or other well-balanced plant food. A good handful to a plant is about the right amount. Frequent light feeding is better than too much at one time.

## Grandiflora Roses

Queen Elizabeth (AA)  
Buccaneer  
Carrousel

Exceptionally fine clear pink  
Non-fading clear yellow  
Large deep red



*Floribunda Roses Give Beautiful All-Summer Color*

## *Floribunda Roses*

Grouped by colors

### PINKS AND SALMONS

Betty Prior  
 Else Poulsen  
 Fashion  
 Gruss an Aachen  
 Lilibet (AA)  
 Ma Perkins (AA)  
 Pink Bountiful  
 Pinocchio

### WHITES

White Bouquet (new)  
 White Pinocchio

### REDS

Donald Prior  
 Fusilier (new)  
 Lafayette Improved  
 Red Pinocchio  
 Vogue (AA)  
 World's Fair

### YELLOWS AND ORANGES

Goldilocks  
 Jiminy Cricket (AA)  
 Spartan

### BICOLORS

Circus, yellow & red (AA)

## *Climbing & Trailing Roses*

Grouped by color for ease in selection

(E) indicates Everblooming, or more accurately, repeat-blooming

### PINKS AND SALMONS

Aloha (E)  
 American Pillar  
 Dream Girl (E)  
 Dorothy Perkins  
 Dr. J. H. Nicholas (E)  
 Inspiration (E)  
 New Dawn (E)

### WHITES

White Dawn (E)  
 Wichuraiana

### REDS

Blaze Everblooming (E)  
 Excelsa  
 Paul Scarlet  
 Ruby Glow (E)

### YELLOWS AND COPPERS

Climbing Goldilocks (E)  
 Climbing Peace (E)  
 Copper Glow  
 Gold Rush (new) (E)  
 Golden Showers (AA) (E)  
 High Noon (E)





*Japanese Black Pine and Bayberry  
Two of the Best Plants for Seashore Exposures*

## *Successful Seaside Planting*

On Cape Cod, where happily "we face four seas," temperature ranges are less extreme, and many kinds of plants thrive which are not winter-hardy inland in New England. Firethorn, Abelia, English Holly and Blue Hydrangeas are examples.

Yet in places directly exposed to the constant salt-laden sea winds of spring and summer, few plants are sturdy enough to survive. Japanese Black Pine, Rugosa Rose, Bayberry, Beachplum, Tamarisk and Russian Olive are most resistant.

Sheltered by massed windbreaks of such kinds, supplemented, if desired, by fences or walls, and given adequate soil preparation, one may indeed have beautiful gardens or borders within only a few feet of the water's edge. We've designed and built many on Cape Cod with marked success.



*Our New Cape Cod Gardening Center in East Falmouth*

## *The Cape Cod Gardening Center*

ON ROUTE 28 IN EAST FALMOUTH

*Your Headquarters for Better Gardening on Cape Cod*

Hundreds of customers, old friends and new ones alike, compliment us on our recently built Cape Cod Gardening Center, and on the attractiveness of both the building and the surrounding acres where thousands of colorful healthy perennials and young evergreens and shrubs are growing, ready for sale.

Modern and attractive, the Gardening Center building is of pleasing Cape Cod architecture, with spacious display and sales areas, easily reached, and with ample off-street parking.

It is the main sales headquarters for all the hardy plant materials produced in our forty acres of Cape Cod Nurseries, and likewise for all the best gardening supplies such as grass seeds, fertilizers, peat moss, pest and weed-control insecticides, lawn mowers, sprinklers, hose, sprayers and useful gardening tools,



— everything you need to make and keep your home grounds attractive.

Container-grown shrubs, evergreens, trees, roses and perennials are today's means of assuring entirely safe planting in midsummer, as well as spring and fall, — particularly helpful to all of you who like to "plant-it-yourself."

Annuals and bedding plants in great variety are ready May 15, both here and at our flower shop and greenhouses on Depot Avenue in Falmouth. Fall-planted bulbs are offered in season, and especially attractive Christmas greens and trees in December.

You'll find our Gardening Center staffed with courteous, competent personnel to help and advise you in wise selection of the right things for the right places.

Visitors are always welcome. We think you will find it well worth coming miles to see. We believe it is the best Gardening Center and Nursery headquarters in Southeastern Massachusetts.

*Your Headquarters for Better Gardening on Cape Cod*





*Warminster Broom's Fountain-like Sprays of Creamy White,  
in an Effective Composition*

## *Deciduous Flowering Shrubs*

Flowering shrubs offer perhaps the greatest and most satisfying return on a small investment. Prices of good sized shrubs are low. Shrubs grow quickly, provide a wealth of flower in their varying seasons, and often have most attractive fruits and brilliant fall foliage color.

They require little care, but should be properly pruned (not top-sheared) each year to provide maximum flower production and retain good form.

Some, such as lilacs, viburnums, honeysuckles, beautybush and mock-orange grow tall and quite imposing. Others, like dwarf deutzias, barberry, bayberry, cotoneasters, and floribunda roses are low-growing, particularly good for use with single-story houses, both Cape Cod traditional and modern ranch-type homes. Still others are especially useful for close-clipped hedges.

All quoted prices are for B & B (Balled and burlapped) or potted plants, for safer transplanting and convenient handling.



## Flowering Shrubs

**AZALEAS.** With the possible exception of roses, these are fast becoming the leaders among flowering shrubs. We carry the flame-red Torch Azalea, (*kaempferi*), the Chinese mollis in yellows and oranges, the Shell-pink vaseyi, the sweet white Swamp Azalea, (*viscosa*), in various blooming sizes at prices from \$3.00. (See also those listed under Evergreens, page 27).

**BARBERRY,** both the green and the red-leaf varieties.

**BUDDLEIA, Butterfly bush.** Deep purple, pink and white varieties at \$1.75.

**CHAENOMELES (Cydonia), Japanese Quince.** Red and beautiful pink varieties.

**CLETHRA, Summersweet.** Fragrant choice native flowering in midsummer, and the splendid new pink-flowering variety.

**CORNUS sibirica, Red-stem Bush Dogwood.** Red branches, white flowers, blue berries. 3 to 4 ft. plants are only \$1.75. (For Flowering Tree Dogwoods please see page 30).

**COTONEASTERS.** More popular every year, for their sturdy compact form, pink flowers and abundant red fruits. Two best upright forms are *divaricata* and *francheti*, with heavy 2 to 3 ft. plants at \$3.00 each, \$33.00 per dozen. *Horizontalis* and *praecox* are beautiful spreading types, priced from \$2.50 to \$3.50.



*Summersweet Clethra, Particularly Fine for Midsummer  
Fragrance and Beauty*

**CYTISUS scoparius** is the well-known bright golden Scotch Broom. **C. praecox** is the Warminster Broom with great fountains of creamy yellow flowers in early June. Thoroughly hardy. We have several unusual varieties, one yellow with red eye, one with maroon-bronze flowers, the closely related hardy **Genista pilosa**, and the true Scotch Gorse, **Spartum**. All are priced from \$1.75 to \$2.50 and are a real value.

**DEUTZIA kalmiaeflora** is the new semi-dwarf Deutzia with large flowers resembling Mountain Laurel only \$2.00.

**ELEAGNUS, Russian Olive**, is noted for its silvery green foliage, distinctive spotted berries, and for its sturdy growth in sea-wind exposures. Sizes from 3 to 6 ft. at \$2.50 to \$3.75.

**ENKIANTHUS, Redvein**, is so named for its red-striped bell-shaped flowers in June, and adds a brilliant red fall color. Quite rare. 1 to 1½ ft. plants only, this year at \$3.00, but they grow quickly.

**EUONYMUS alatus, The Cork-bark or Winged Euonymus** has dense bright green foliage turning the most brilliant cerise-red in fall. Fine for borders. 3 to 5 ft. plants from \$4.25 to \$5.50. The variety **alatus compactus**, is semi-dwarf, very dense, with the same brilliant color. 2 to 4 ft. at \$4.25 to \$5.50.

**FORSYTHIA** is spring itself. Three varieties, the brilliant **spectabilis**, the new large-flowered "**Lynwood Gold**," and the new lemon-yellow "**Spring Glory**," are all outstanding. A great value in extra bushy plants from 3 to 6 ft. high at only \$1.80 to \$3.50.

**HIBISCUS syriacus, Althea, or Rose of Sharon.** The most outstanding summer-flowering shrubs, covered in August with large hollyhock-like blooms. Lady Stanley is blush pink, Pink Beauty is a clear single pink, Banner is white with a red eye, Wm. R. Smith is a large single pure white, and our own introduction "**Cape Cod Skies**" is a clean true blue. Sizes run from 2 ft. to as high as 6 ft. in some varieties, at prices from \$2.00 to \$4.50.

**HYDRANGEA macrophylla** is the distinctive **Blue Hydrangea**. We have the giant double-flowering variety, and the distinctively different single blue type also, at \$3.50.

**HYPERICUM prolificum, St. Johnswort**, is a low growing shrub covered all summer with large crested yellow flowers. Only \$2.00.

**KOLKWITZIA, Beautybush**, well deserves its common name. Long arching branches on rapidly growing shrubs are covered in June with hundreds of soft pink bells. Sizes up to 6 ft. are priced from \$2.25 to \$4.50.



**LIGUSTRUM ovalifolium** is the **California Privet** so effectively used in hedges. Plant 12 plants for 10 feet of hedge. 2 to 3 ft. size is \$35.00 per hundred; 3 to 4 ft., \$40.00. **L. regelianum, Regal's Privet**, is of a spreading habit, good for facing down higher shrubs; has white flowers in July. 1½ to 2 ft. plants are only \$1.00 each, \$10.80 per dozen.

**MYRICA pensylvanica** is our old native friend **Bayberry**. Its fragrant waxy gray berries are used to make candles. Clean glossy foliage and sturdy growth. \$1.50 and \$2.00.

**PHILADELPHUS coronarius, Mockorange**. Old timers know it as Sweet Syringa. Tall growing, June flowering, 3 to 4 ft. plants are \$2.25 each.

**PRUNUS maritima** is the **Beach Plum**, a true Cape Codder. Beautiful in flower in early May, its juicy fruits make wonderful jelly. We have stocky nursery-grown plants, 1½ to 3 ft. at \$1.50 to \$2.25.

**ROSES, Shrub Types.** (See pages 12 to 14 for Garden Roses)

**Harisoni** has large double yellow flowers in June. 2 to 3 ft. \$3.00

**Hugonis, Golden Rose of China.** Great arching sprays of single yellow flowers in May. 2 to 3 ft. \$3.00.

**Multiflora**, widely recommended for thick hedges and barriers where its spread can be allowed. 2 year transplants at \$30.00 per hundred.

**Rugosa.** The one best flowering shrub for direct sea-wind exposures. Showy deep pink flowers followed by large red seed-hips. \$1.75 each, \$19.20 per dozen. We also have the white-flowering variety, equally hardy.

**Rugosa Agnes** has large double pale yellow flowers, very fragrant in June. 2 to 3 ft. plants are \$2.50.

**SPIRAEA Anthony Waterer** is a good midsummer dwarf shrub with flat heads of old rose flowers. \$2.25.

**S. vanhouttei** is popularly called Bridal Wreath. Arching branches are covered with its white flowers in late May and June. 2 to 3 ft. \$1.75; 3 to 4 ft. \$2.25.

**S. cantoniensis** is like the above, but blooms about 3 weeks later. Flowers are double. 2 to 3 ft. \$2.25; 3 to 4 ft. \$3.00.

**SYRINGA** includes the whole family of **Lilacs**.

The old fashioned **Common Lilac, vulgaris**, will always be a favorite, as will the white variety.

**French Hybrid Lilacs** are the group that have the greatly improved flowers in a wide range of beautiful colors. Young plants produce flowers, and grow quickly if given good soil and food. These are a "must" for the home grounds. Sizes from 12 to 18 in. to 3 to 4 ft. priced from \$2.00 up.

**TAMARIX odessana, Tamarisk**, blooms with pink flowers above feathery bluish foliage in July. The variety *parviflora* blooms in May. Both are strong in seawinds and very effective. 3 to 4 ft. plants are \$2.50.

**VIBURNUMS** are one of the finest of all plant families.

**V. carlesi** is the extremely fragrant "**Mayflower Viburnum**" with magnificent pale pink flower heads in May. \$4.50.

**V. dentatum**, **Arrowwood**, is a sturdy native, most adaptable, has white flowers followed by blue fruits. \$1.75 and \$2.50.

**V. dilatatum**, **Linden Viburnum**, has glossy foliage and large masses of red fruits. Slower growing. \$3.50.

**V. sieboldi**, **Sieboldi V.**, has bold foliage, makes a large specimen bush up to 15 feet. Abundant red fruit clusters. 2 to 3 ft. plants are \$3.00.

**V. tomentosum**, **Doublefile V.**, has very large flat white flower heads in June above heavy clean foliage that turns purple in the fall. A truly outstanding shrub. Our plants are all extra-heavy grade, from 2 to 6 ft. priced from \$2.25 to \$6.25, and well worth it.

**V. trilobum** is called **Cranberry Viburnum** because of its big clusters of bright red berries in late summer and fall \$2.00.

**VITEX macrophylla**, **Chastetree**, has large upright clear blue lilac-like flower spikes in August and September. Potted plants at \$2.00 bloom the first summer.

**WEIGELA florida** is Pink Weigela, well known for its sturdy growth and abundance of pink trumpet flowers in June. The **Crimson Hybrid** is a fine red-flowered variety, and **variegata** has green and white foliage with pale pink flowers. 2 to 3 ft. and 3 to 4 ft. sizes. \$2.00 to \$3.00.

We also have the following Shrubs in limited sizes and quantities:

**ARONIA**, Red Chokeberry

**CALLICARPA**, Japanese Beautyberry

**CORNUS mas**, Cornelian Cherry

**CORNUS racemosa**, Gray Dogwood

**COTINUS coggygria**, Smoketree  
Also the Purple-leaf Smoketree

**DEUTZIA gracilis**, *gracilis rosea*  
and *scabra* **Pride of Rochester**

**FRANKLINIA** in small sizes

**JASMINIUM**, Winter Jasmine

**LIGUSTRUM obtusifolium**, Iboia  
Privet

**LONICERA fragrantissima** and  
*tatarica*, Bush Honeysuckles

**PHILADELPHUS** *virginialis*,  
Double Mockorange

**PHOTINIA**, Christmasberry

**PRUNUS glandulosa**, Pink Flowering Almond

**PRUNUS triloba**, Double-flowering Plum

**SALIX purpurea**, Purpleosier Willow

**SYMPLOCOS**, Sapphireberry

**SYMPHORICARPOS**, Snowberry

**SYRINGA persica**, Persian Lilac

**VACCINIUM corymbosum**, Native Highbush Blueberry and the best Hybrid varieties

**VIBURNUM rhytidophyllum**  
and *setigerum*

**WEIGELA candida**, White Weigela

Visit our new **Cape Cod Gardening Center**  
on Main Route 28 in East Falmouth  
**Everything for Better Gardening on Cape Cod**



## Climbing Vines

These are the upright kinds that are so useful for beautifying buildings, walls and fences. They take up little space yet contribute greatly to an attractive picture, and they cost so little. (Other kinds useful for massing on slopes are listed under Ground Covers.)

C indicates kinds that cling tightly to buildings, walls, etc.  
S indicates kinds requiring support (fences, wires, trellises, etc.)

### *Vines Valuable for Beauty of Flowers*

**CLEMATIS paniculata** (S). The fragrant white autumn Clematis. \$1.50.

**HYBRID CLEMATIS** (S). Beautiful large flowers in summer, in blue, purple, lavender, white and crimson varieties. \$2.00.

**FLEECEVINE** (Polyganum) (S). Fastest growing hardy vine, foamy white flower masses in August. Stands wind. \$1.50.

**HALL'S HONEYSUCKLE** (S) is the extremely fragrant mid-summer yellow flowering favorite, \$1.25. We also have the crimson-purple variety.

**CLIMBING HYDRANGEA** (C). Large white flower heads in July. Rare. \$3.25.

**CLIMBING ROSES** (S), most colorful of all vines. Please see page 14.

**TRUMPET VINE** (S). Large growing, covered with yellow-orange trumpets in midsummer. Hummingbirds like its honey. \$1.75.

**WISTARIA** (S). Beautiful drooping fragrant flower clusters in late May. Lavender and white varieties. Needs strong support. \$3.00.

### *Vines for Good Foliage Cover*

**BOSTON IVY** and **WOODBINE** (Virginia Creeper) are tight clingers, rapid growers, have bright red fall foliage color. \$1.50.

**ENGLISH IVY** is the best evergreen clinging vine. Entirely hardy here, 35c to \$1.00.

**EUONYMUS** or **Wintercreeper** is another fine evergreen climber. Four kinds of varying types, all good. \$1.25 to \$2.00.

**PORCELAINBERRY** (S) has most attractive turquoise fruit. Best on fences and low walls, as it needs some support. \$1.75.

**DUTCHMAN'S PIPE** (S) is still much used for its heavy foliage masses. \$2.50.

**GRAPES** (S) are double-value vines, abundant fruit and strong foliage. \$1.50.



*Good Ground Cover Enriches Attractive Plantings*

## Ground Covers

Steadily in recent years the swing has been to beautiful ground-cover plantings. Once established, their solid mass effects require almost no maintenance. Often by using drifts of different kinds of plants, carefully planned and melded together, effects of great beauty and character can be created.

Because of their importance and effectiveness we in the Cape Cod Nurseries are specializing in ground cover plants of many kinds, and we therefore group them here as a class of materials of special use and appeal.

**SCOTCH HEATHER** (*Calluna*), we feel is of top merit.

Quantities of pink, rose and white flower spikes cover the low-spreading massed evergreen foliage in midsummer. Fine on dry slopes and in borders. Eight varieties. \$9.60 per dozen, \$60.00 per hundred.

**TRUE HEATH** (*Erica*) resembles Heather but flowers as early as February and March in sheltered spots. Pink and white varieties. \$9.60 per dozen.



**BEARBERRY** or Wild Cranberry (*Arctostaphylos*) is a beautiful thing, with dense mats and trailers of shiny evergreen foliage that turns maroon-bronze in fall, with pink flowers and red berries. A true Cape Codder. Good for sandy banks and broad carpeting effects. Pot grown, \$7.50 per dozen, \$50.00 per hundred.

**MYRTLE** or Periwinkle (*Vinca minor*) Bowles variety is the improved kind, with glossy evergreen foliage and bright blue flowers. Spreads rapidly, good in shade. \$6.00 per dozen, \$45.00 per hundred.

**PACHYSANDRA** (Spurge) is very widely used for solid masses of clear green with attractive white flowers in spring. Thrives in shade, needs good soil. \$3.60 per dozen, \$25.00 per hundred.

**PACHISTIMA** is a nice compact low-spreading dwarf evergreen, good for edging and for ground cover in light shade. \$10.80 per dozen.

**ENGLISH IVY** trails out on the ground to make dense covers of glossy foliage in appropriate locations. Most effective. \$30.00 per hundred.

**EVERGREEN EUONYMUS** varieties make excellent ground cover masses and have Bittersweet-type fruits in fall. \$13.20 to \$22.20 per dozen.

**FERNS** are excellent ground covers. Hayscented Fern spreads quickly. In heavy square-foot turfs. \$70.00 per hundred. Christmas Fern holds its clean fronds all winter. \$50.00 per hundred.

A number of the hardy perennial flowers make splendid all-year ground-covers. Moss Sandwort (*Arenaria*) used among steppingstones gives a flat moss-like effect. Creeping Thymes are equally good among stones and in open broad drifts, with crimson and white flowers in summer. Ajuga is good in shade. Artemisia Silver Mound, Cerastium, Dianthus, Lavandula, and Santolina all have silvery gray foliage, excellent for contrasting drifts of ground-cover. Ceratostigma with its brilliant blue flowers all summer is a fast spreader. Epimedium with strong foliage and rose flowers does well in shade. Hardy Candytuft with evergreen foliage is attractive all year. Creeping Phlox gives brilliant spring color, while the Sedums and Hen-and-Chickens are good spreaders, especially among rocks.

All these perennials are listed in pages 6 to 10. Then, in addition, in a great deal of our landscaping work we find particularly effective for ground covers and on slopes the use of such spreading evergreens as Andorra and Pfitzer Junipers, the Box-Leaf and Stokes Hollies, and spreading English and Japanese Yews, together with the excellent berry-bearing Coton-easters, horizontalis and praecox, and a number of the collected natives like dwarf blueberry, huckleberry, bayberry, wild lily of the valley, checkerberry.

Such plantings quickly adapt themselves, and properly used, will add great naturalistic beauty to the grounds.



*Rhododendrons, Outstanding Flowering Evergreens*

## *Evergreen Trees and Shrubs*

Because evergreens, as the name indicates, hold their foliage all winter and throughout the whole year, this constant beauty is their greatest common asset. But like the deciduous plants, some grow tall, even make large trees, while others are bush-form and still others low and spreading. All evergreens bear flowers, but on the coniferous types like pines, spruces, hemlocks, junipers, arborvitae and yews, those flowers are relatively inconspicuous, while the broad-leaf types like azaleas, rhododendrons, and andromedas have most beautiful blossoms that greatly enhance their worth. Wise choice is thus necessary, depending on personal preference and on which effects are appropriate.

For convenient reference and selection we list first the taller growing tree-type evergreens, then the medium-height and lower spreading kinds.

---

NOTE. Evergreen ground covers such as Heather, Pachysandra, Myrtle, etc., are listed under Ground Covers, on Page 24.

---



## These Are the Taller Growing Kinds

**ARBORVITAE** (*Thuja*) both the Dark American (*nigra*) and the narrower Pyramid (*pyramidalis*) are good, 1½-5 ft., \$3.25-\$8.00.

**CAROLINA HEMLOCK.** Glossy dark green small needles, dense growth, 2-3 ft. \$6.00.

**RED PINE** (*P. resinosa*). Long needles, rapid growth. Use elsewhere than in direct salt-wind exposures, 3-7 ft. from \$6.00.

**JAPANESE BLACK PINE** (*P. thunbergi*). The very best evergreen tree for seashore exposures. In 1½-3½ ft. sizes. \$4.00-\$8.00.

**RED CEDAR** is the columnar native Juniper. In sizes from 3-8 ft., \$5.50-\$12.00. Collected large trees up to 25 ft. high can be safely moved.

**SPRUCE** (*Picea*). Pointed form (like "Christmas Trees"), excellent lawn specimens. Five kinds. White Spruce, 15-18 in. \$3.00; Norway Spruce, 3-5 ft., \$6.00-\$8.00; Green Colorado Spruce, 2-4 ft., \$7.00-\$9.00; Blue Spruce, 2-5 ft., \$9.00-\$16.00; Red Spruce, 3-5 ft., \$7.50-\$10.00.

## These Are the Medium and Dwarf-Growing Kinds

(B) indicates broadleaf type; (C) indicates so-called coniferous kinds.

**ABELIA** (B). Graceful low shrub to 5 ft. with glossy foliage and pink flowers from July to October. \$3.25.

**AZALEAS** (B). As with the deciduous azaleas (page 19) the evergreen types include many beautiful colors and kinds, in pure white, pinks, lavender, yellows, oranges and bright crimson. From \$3.00, depending on size and variety.

**BOXWOOD** (B). The common northern variety, fine plants, 12-18 in. at \$3.00 and \$4.00.

**DAPHNE cneorum**, Garland flower, (B) makes charming low mounds with fragrant pink flowers in May, 9-12 in. \$3.00.

**EUONYMUS japonicus** (B) is an upright bush with very shiny foliage, hardy near the coast, 9-18 in. plants. \$2.50-\$3.25.

**FIRETHORN** (*Pyracantha*) (B) is universally in demand. White flowers are followed by brilliant orange fruit clusters. Often trained in espalier form against walls and buildings. Fine potted plants, \$3.50.

**GLOBE ARBORVITAE** (C) is a naturally low globe-shape variety, in 15-24 in. plants at \$3.00 and \$4.00. The Siberian Arborvitae is broad conical in shape, rather slow growing. 1½-4 ft., from \$4.50.

**HOLLY** (B). The Ilex family is large, and all members are exceptionally attractive. Here they are.

**American Holly** (*I. opaca*). The popular Christmas Holly all grown from berry-bearing Cape Cod plants, and thoroughly hardy. Sizes 9-24 in., \$1.75-\$5.00. Will grow quickly in good soil.

**Inkberry** (*I. glabra*) is a fine native, glossy foliage, black berries, 12-18 in. nursery grown plants. \$3.50-\$4.00.

**Box-Leaf Holly** (*I. crenata convexa*) is the best spreading type broadleaf evergreen. Shining leaves, compact growth, stands clipping, if desired. Costs more but well worth it. \$7.00-\$9.00.

**Japanese Holly** (*I. crenata* hybrids). Upright-growing, fine plants, rather fast-growing. \$6.00-\$7.50.

**English Holly** (*I. aquifolium*) has very glossy foliage, large red berries. Fully hardy on Cape Cod. 1-2 ft. plants, \$3.00-\$4.50.

**HINOKI FALSECYPRESS** (*Chamaecyparis obtusa gracilis*) (C) is exceptionally attractive with laminated and tufted foliage of deep green. 1½-2 ft. \$7.00. The dwarf variety *nana* is very slow-growing. 10-12 in., \$5.00.

**SPREADING JUNIPERS** (C) include the fast-growing green Pfitzer Juniper in sizes from 1-2½ ft. spread, \$5.00-\$9.00, the gray-foliage Hetz Juniper, 1½-2 ft., \$7.00; and the flatter growing Andorra Juniper which turns purplish in fall. 1½-2 ft., \$6.50.

**LAURELCHERRY** (*Prunus laurocerasus*) (B) has large arching leaf-sprays of shining green, spreading growth, white flowers. 15-24 in. plants. \$4.00 and \$5.00.

**LEUCOTHOE** (B) with arching foliage sprays and white flowers thrives in shade. 15-18 in. plants are \$5.00.

**MOUNTAIN LAUREL** (*Kalmia latifolia*) (B) is one of the most beautiful of all flowering shrubs. Nursery-grown plants, 1½-2½ ft. at \$7.50 and \$9.00.

**MUGHOPINE** (C) is a truly dwarf compact true pine, stands sea winds well. 10-18 in. at \$4.00 and \$5.50.

**PIERIS** (*Andromeda*) (B) is most popular. The Japanese variety is especially attractive in early spring with white flowers above new soft pinkish-green glossy leaves. 1-2½ ft. plants from \$4.00. The Mountain *Andromeda* is lower-growing, with upright flowers.



**RHODODENDRONS** are a magnificent family. The Carolina variety has pale pink flowers in May. 15-30 in. plants from \$6.00. The Wilson variety is a low-growing compact type, with deep pink flowers in late June, 1-2 ft. from \$6.00. The Rosebay variety, maximum, is tall growing, fine for partial shade, has apple blossom pink flowers in July. 1½-3½ ft. plants from \$6.00. The large-flowered Hybrid Rhododendrons have most attractive colors in June; 1-2 ft. strong plants from \$5.00.

**YEW** (*Taxus*) (C) come in many fine varieties and are perhaps the best of all general-purpose evergreens. The spreading types, *cuspidata*, *nana*, and *repandens* all grow broader than high. Prices run from \$6.00, an excellent value. The upright types include the Pyramidal Japanese, the rather columnar Hicks and Hatfield-varieties, and the more compact *densiformis* type. All are rich dark green, several bear juicy red fruits enjoyed by birds and people. From \$6.00.

## Now—Container-Grown Plants Safest of All to Plant

First in this section to adopt the new trend, we see tremendous advantages to customers and ourselves in the modern container-grown stock of many kinds of flowering shrubs and trees, evergreens, vines and unusual plants.

Clean and easy to handle, certain to live because all the plant's roots are undisturbed in transplanting, and best of all, safe to plant at any time of the year including midsummer, these new container-grown plants are the greatest advance in improved nursery practice in many a year.

We are rapidly increasing our stock of those kinds of plants best grown in this manner.

Plants whose root systems are compact and easy to transplant will still be handled "B & B" (balled and burlapped), and others like roses and chrysanthemums will be potted in spring for later-season planting, as usual.

Come and see these plants at their best — fresh Cape-grown, quality stock, carefully handled, conveniently displayed, and *guaranteed* to grow.



*The Unexcelled Beauty of Flowering Dogwood*

## *Flowering And Shade Trees*

Everyone knows and admires the familiar large-growing trees like Maples, Oaks, Elms, Lindens and Beeches.

Today finds more and more emphasis placed on the use of the flowering trees, such as Dogwood, Crabapples, Hawthorns, Magnolias, and several others. These smaller trees are especially appropriate in connection with the modern trend to lower, single-story homes. Properly placed, they add great beauty of flower and form to every home grounds.

We list these trees first, followed by a second group of the larger-growing types.

### *The Best Flowering Trees*

**DOGWOOD** (*Cornus*). The two best known, flowering in late May, are the white flowering, in sizes from 3-6 ft., from \$6.50-\$11.00, and the beautiful pink flowering, 2-6 ft., from \$5.75-\$16.00. Of equal beauty and flowering a month later is the fine Japanese Kousa Dogwood, in sizes 2-5 ft., from \$4.50-\$8.50.



**HAWTHORN** (*Crataegus*) is offered in two varieties. 5-6 ft., Paul's Scarlet are \$7.50, and Washington Hawthorn, with white flowers and orange-red fruits in sizes from 3-5 ft., at \$4.00 and \$5.00.

**FLOWERING CRABAPPLES** are among the finest of all. We have ten named varieties. Trees are literally covered with flowers followed by most ornamental fruits all through the fall. Flower range is from white and palest pink through to deep crimson. Several varieties have purplish red foliage all season. Strong young trees 4-8 ft. high range from \$6.00-\$8.00

**GOLDENCHAIN** (*Laburnum*) has large yellow drooping flower clusters in June. 6-8 ft. plants are \$10.00.

**FLOWERING CHERRY** (*Prunus*). Large double pink flowers cover the upright-form Kwanson variety in May. 5-8 ft. trees are \$7.50 and \$12.00. The Weeping Cherry with its drooping branches has pale pink flowers. 5-6 ft., \$10.00.

**MAGNOLIA** with its giant flowers unfolding in April before the leaves appear is most effective. Both white and purple varieties, from \$7.00.

**JAPANESE BLOODLEAF MAPLE**. Grafted specimens of these much admired dwarf red maples. 1½-4 ft., from \$6.00-\$12.00.

**EUROPEAN MOUNTAIN ASH** makes a fine rather narrow tree, with creamy flower heads and masses of brilliant orange fruits in late summer. 8-10 ft., \$10.00.

**PURPLE-LEAF PLUM**, Thundercloud variety, has nice pale pink flowers early in spring, and really purple foliage all season. 4-6 ft., \$5.00 and \$7.00.

**SILVERBELL** (*Halesia*) is a beautiful small shrub-form tree with bell-shaped white flowers in spring. 4-5 ft., \$6.00.

**SORREL TREE** (*Oxydendrum*), a relatively rare plant, is particularly valuable for midsummer flowers above glossy foliage that turns brilliant maroon red in fall. 2-3 ft., \$5.00.

**WHITE FRINGE** is an attractive thing with pendulous flowers in June. 3-4 ft. branching plants are \$3.00.

**BIRCH**. The Canoe Birch, *papyrifera*, has the whitest bark of all the birches. 6-10 ft. \$7.50 and \$10.00. The Weeping Birch has finely cut leaves, makes a beautiful lawn specimen. 8-10 ft. trees are \$11.00.

## *The Larger-Growing Shade Trees*

**AMERICAN BEECH** (*Fagus*). Fine for large lawn specimens, low-branching clean green foliage turning golden-russet in fall. 3-6 ft., \$6.00-\$9.00. The Rivers Purple Beech, grafted plants, are slow growing, most attractive. 2-3 ft., \$7.00.

**ELM** (*Ulmus americana*). Still a great favorite for its distinctive form and beauty. If well cared for it should not be affected by disease. 8-12 ft., \$7.50 and \$10.00.

**LINDEN** (*Tilia cordata*), European Littleleaf variety. An excellent dense growing tree of good form, with fragrant flowers in July. 6-8 ft., \$8.00.

**HONEY LOCUST** (*Gleditzia*). Good sturdy trees, rather picturesque growth, good to provide light shade. Thornless variety 8-10 ft., \$12.00.

**MORaine HONEYLOCUST** is a patented strain, selected for its more regular vase-form growth. 6-10 ft., \$11.00 and \$17.50.

**MAPLE** (*Acer*). Norway Maples are much used for street trees; Red Maples (*rubrum*) are natives, noted for brilliant red flowers in spring and scarlet fall color; Schwedler variety has reddish leaves in spring soon turning to dark green. 6-12 ft. Maples are priced from \$5.00-\$12.00.

**CRIMSON KING MAPLE** has maroon-red foliage all season, a splendid accent tree. 8-10 ft., \$15.00.

**PIN OAK** (*Quercus palustris*) is one of the best of all trees. Sturdy growth, horizontal branching, red fall color. 6-8 ft., \$8.00.

**WILLOW** (*Salix*). The variety Niobe is the justly popular Goldenbark Weeping Willow, rapid growing. 6-8 ft., \$8.00. We also have the French Pussywillows, and the Laurel-Leaf Willows, in shrub forms, 3-5 ft., \$1.25 \$1.75.

## *Fruit Trees and Bush Fruits*

We carry an ample line of husky 2-year Apples, Pears, Peaches and Cherries, in many selected varieties found best for this area. Likewise we have the splendid Hybrid Blueberries and other bush fruits such as Raspberries, Currants and Grapes. Prices for all fruits are low, and potential values high.





## Fertilizers, Grass Seed and Lawn Care Products

Good lawns do as much as trees and shrubs and flowers to make home grounds attractive.

To keep lawns good, feed them at least twice a year, in early spring and early fall. A third feeding in midsummer is desirable. Many lawn weeds, even crabgrass, can be controlled by careful and proper use of the right materials.

For proper lawn making, and for capable maintenance of your lawns and grounds, our complete landscaping service is at your command.

We specialize in the following products, which our judgment and experience indicate are the best for their respective purposes. We are authorized agents for the nationally famous O. M. Scott Company grass seeds, weed controls, lawn foods and spreaders. We recommend them highly.

### Grass Seed Mixtures

We recommend  $4\frac{1}{2}$  to 5 pounds per 1000 square feet.

**Lawrence's Cape Cod Lawn Seed.** A carefully formulated mixture of permanent grasses best for this section. Prepared either with or without white clover, as preferred.

50 lbs. or more at 85c per pound; 1 lb. \$1.00; 5 lbs. \$4.85; 10 lbs. \$9.00.

**Lawrence's Superfine.** A blend of fine-texture grasses, including bent, for making a thick velvety turf.

50 lbs. or more at 95¢ per pound; 1 lb. \$1.15; 5 lbs. \$5.25; 10 lbs. \$10.00.

**Sylvan Shade Lawn Seed.** Prepared for partly-shady areas.

10 lbs. \$12.50; 1 lb. \$1.35.

**Wild Grass Mixture.** Made of tougher grasses, for banks or areas where mowed lawn is not desired.

10 lbs. \$6.00; 1 lb. 65.

**Scott's Picture Lawn Seed, (Deluxe).** 500 sq. ft. box \$1.75; 2500 sq. ft. box \$8.50; 12,500 sq. ft. box \$38.85.

**Scott's Family Lawn Seed,** for sun or shade, terrace and slopes. 250 sq. ft. box \$1.45; 1250 sq. ft. box \$6.95; 6250 sq. ft. box \$29.95.

**Scott's Play-Lawn Seed, (Utility),** made of wear-resistant grasses, for less favorable conditions.

125 sq. ft. box \$1.00; 625 sq. ft. box \$4.75; 3000 sq. ft. box \$19.95.

**Scott's Blue Grass Blend,** specially recommended for strong turf.

250 sq. ft. box \$1.50; 1000 sq. ft. box \$5.95; 10,000 sq. ft. box \$52.50.

## Recommended Fertilizers for Lawns, Trees and Gardens

We carry the full line of top-quality "Agrico" fertilizers.

**Agrico for turf**, 6-8-2, an excellent 50% natural organic lawn food.

Use 3 to 4 lbs. per 100 sq. ft. 100 lbs. \$5.20; 50 lbs. \$2.65; 25 lbs. \$1.75.

**Agrico for Lawns, Trees and Shrubs**, 6-10-4, 100 lbs. \$5.70; 50 lbs. \$2.90; 25 lbs. \$1.85.

**Agrico for Gardens**, 5-10-5, a good all-purpose food. Use 5 to 6 lbs. per 100 sq. ft. 100 lbs. \$5.20; 50 lbs. \$2.65; 25 lbs. \$1.75; 10 lbs. \$1.10; 5 lbs. 60¢.

**Agrico for Broadleaf Evergreens**, 6-10-4, an acid-base fertilizer for Azaleas, Rhododendron, Dogwood, Blueberries, Heather and all acid-soil plants.

4 lbs. per 100 sq. ft. 100 lbs. \$6.55; 50 lbs. \$3.35; 25 lbs. \$2.10; 10 lbs. \$1.25; 5 lbs. 65¢.

**Agrico for Roses**, specially compounded for best rose culture.

Feed roses lightly every 3 weeks from April to mid-August. 100 lbs. \$10.50; 50 lbs. \$5.35; 25 lbs. \$3.00; 10 lbs. \$1.50; 5 lbs. 90¢.

**Scott's Turf Builder**, a fine lawn food, part organic. Use only 2 lbs. per 100 sq. ft.; 500 sq. ft. size \$4.50; 2500 sq. ft. size \$2.75.

**Scott's Soil Improver**, not so much a food as a soil conditioner for poor soils. 2500 sq. ft. size \$2.95.

**Ground Magnesium Limestone**, for correcting too high soil acidity. Use 10 lbs. per 100 sq. ft. 80 lb. bag \$1.25; 50 lbs. 85¢.

## Weed Controls

Properly used, these really do a good job.

**Scott's Weed-and-Feed**. Kills weeds and feeds the desirable grasses in one application. 5000 sq. ft. package \$5.95; 2500 sq. ft. size \$3.45; 1000 sq. ft. size \$1.95.

**Scott's 4X-D Weed Control**. Applied dry, kills dandelions, plantain, and other broadleaf weeds in the lawn. 5000 sq. ft. size \$3.75; 2500 sq. ft. size \$1.95.

**Scott's "Cope" Pest Control**. Chlordane base, kills Japanese beetle grubs and other grubs in the soil. 5000 sq. ft. size \$3.95; 2500 sq. ft. size \$2.45.

**Scott's "Scutl."** Effective early summer control of crabgrass. 5000 sq. ft. size \$5.95; 2500 sq. ft. size \$3.45.

**Scott's "Clout."** Really "clouts" established crab grass. Good grass is discolored but recovers soon. 5000 sq. ft. size \$6.95; 2500 sq. ft. size \$3.95.



**Scott's "Kansel".** Eliminates white clover and reduces chickweed in lawns, 5000 sq. ft. size \$4.95; 2500 sq. ft. size \$2.95.

**SCOTT'S SPREADERS,** for easy application of law fertilizers, and weed and pest controls. 4 sizes, \$9.98, \$12.95; \$16.95, and \$24.95.

In addition to the above listed items we carry both at the Gardening Center and at the Flower and Garden Shop on Depot Avenue, Falmouth, many other gardening essentials, such as peat moss, ground bone, Farmanure, cattle manure, Milorganite, Baccto-Peat, Bartlett Tree Food, leading brands of insecticides and fungicides, sprayers and dusters, hose and lawn sprinklers, plant stakes, and all types of gardening tools.

## Practical Planting Instructions

### HOW TO PREPARE SOIL

Remove poor subsoils to the full depth specified and refill with good fertile topsoil loam to the following recommended depths:

For *flowers, vegetables and most ground cover plants*, 9 to 12 inches.

For *flowering shrubs, hedges, floribunda roses, vines, bush fruits and most evergreens*, 16 to 18 inches.

For *hybrid tea roses*, 24 to 30 inches is worth the cost; for *all trees, evergreen and deciduous*, holes at least 6 inches deeper and 2 feet wider than the full spread of the roots.

For *good lawns*, 4 inches is minimum if subsoil is heavy, 8 inches on light sandy subsoils.

For *all plants*, mix into the good loam well-rotted cow manure, adding about 2 inches for every foot in depth. Peat added and mixed in the same proportion is good in lighter soils. If soil is decidedly acid, add lime at 6 to 8 pounds per 100 square feet.

### HOW TO PLANT

Dig holes, wider and a little deeper than the roots; set plants at same depth as before (inspection will show) or a very little deeper. Work loose loam around roots, filling half way. Water thoroughly and after settling fill nearly to ground level, firm the soil moderately, leaving saucer-shape depression to hold further water.

Water thoroughly twice a week (a surface sprinkling is not nearly enough) during the first growing season.

Spacing. Allow room enough for each type of plant to attain its natural mature beauty.

Mulching. Covering the surface with peat moss or cow-manure after planting is helpful, retains soil moisture, prevents frost-heaving in winter. Do not cover green foliage at base of plants. Apply winter-mulching after ground is frozen.

# Information for Customers

## Guarantee

All our stock is guaranteed true to name, in good condition, carefully dug, and properly packed for safe delivery.

Where in our judgment our plants are properly planted and receive adequate watering and after-care, we will replace any plants that fail to survive the first growing season.

Good soil preparation and frequent thorough watering are most important.

## Prices

If a complete detailed list of prices for all kinds and sizes of plants is desired, a post card or phone call will bring such a list to you promptly.

1 to 5 plants of the same kind (excepting perennials) at the each price; 6 or more at the dozen rate, and 25 or more at the hundred rate where quoted.

All prices quoted are F.O.B. our nurseries in East Falmouth.

Because of conditions beyond our control, prices are subject to change without notice. This list cancels all previous lists.

There will be from time to time various specially priced offers at our Gardening Center. Watch the local newspapers for these specials throughout the season.

## Deliveries and Shipping

Truck deliveries without charge are scheduled Fridays during April, May and June, covering all Cape Cod as far as Orleans. For other truck deliveries, fair charges are made, depending on distance and load.

For the convenience of Nantucket and Martha's Vineyard customers, free deliveries to the Woods Hole dock will be made Mondays and Thursdays during the spring.

## Business Hours

Our **Nurseries** are open weekdays from 8:00 A.M. to 4:30 P.M., and closed Sundays and holidays.

Our **Cape Cod Gardening Center** will be open weekdays from April on, from 8:00 A.M. to 5:00 P.M., and closed on Sundays and national holidays.

Our **Flower Shop, Landscape Offices, and Business Offices** at 34 Depot Avenue in Falmouth are open weekdays from 8:00 A.M. to 5:30 P.M., and closed Sundays and holidays.

### Members:

American Association of Nurserymen  
New England Nurserymen's Association  
Massachusetts Nurserymen's Association  
Society of American Florists  
Florists' Telegraph Delivery Association  
Massachusetts Horticultural Society







# *Gardening on Cape Cod*

Since 1886

H. V. LAWRENCE, INC.

*The Cape Cod Nurseries*

FALMOUTH, MASSACHUSETTS